



SISD SUPERINTENDENT

Dr. Maria M. Vidaurri

BOARD OF TRUSTEES

Jose Garcia – President

Keith Padilla – Vice President

Julio Cerda – Secretary

Hector Rivera – Asst. Secretary

Dr. Noe Oliveira – Member

Ricky Longoria – Member

Melissa Smith – Member

1200 N. SHARY ROAD, MISSION, TX 78572 PHONE: 956-580-5200 FAX: 956-580-5229 WWW.SHARYLANDISD.ORG

Dear Parents and Guardians,

First and foremost, we hope you and your families are safe and healthy. Thank you again for your patience as we continue our efforts to support learning at home for all of our students. **For students who are not able to access our digital instructional resources, we have completed instructional packets for our high school students.**

These packets are designed to cover six weeks of content that began on April 6, 2020 and will finish on May 15, 2020.

On **Thursday, April 16, 2020**, we will have our instructional packet distribution at Sharyland High School located at 1216 N. Shary Road Mission, Texas 78572.

The distribution times are as follows:

Morning 8:00 to 10:00 a.m.

Afternoon 4:00 to 6:00 p.m.

For your safety and ours, we ask for your cooperation with the following instructions when you come to pick up the packets for your children. Please stay in your car at all times. We ask you place a piece of paper on the passenger side dash board with the courses your child is taking this semester. Please see the example below. We will be handing the packets through the passenger side window. If possible, please have this seat empty to limit exposure.

We encourage our families who do not have access to our high school digital learning platforms to make every effort to pick up the printed instructional packets. The activities included in the instructional packets will help your children maintain skills they have learned during the previous months of instruction. Please keep in mind that the successful completion of these packets will allow your children the opportunity to gain credit for semester four and final credit for each of their courses. **If you DO have access to the digital platforms, you do not have to pick up any printed instructional packets.** We encourage your children to continue the use of the digital platforms to access and submit their work.

We would like to thank you for your constant support and understanding. Together, we will ensure that our students continue to be productive and engaged in their learning.

Dr. Maria M. Vidaurri

Sharyland ISD Superintendent of Schools

SISD does not discriminate on basis of race, color, national origin, gender, religion, age or disability in employment or provision of services, programs or activities.

Trust • Communication • Collective Responsibility • Care • Pride

Please list your child's schedule in this order:

Math

History

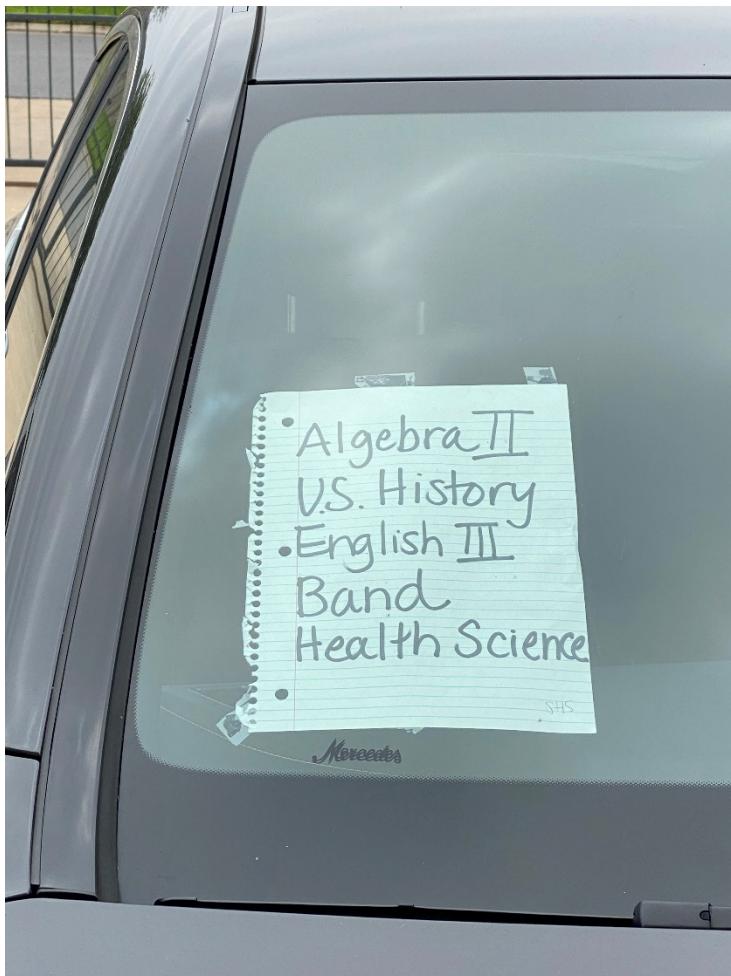
Science

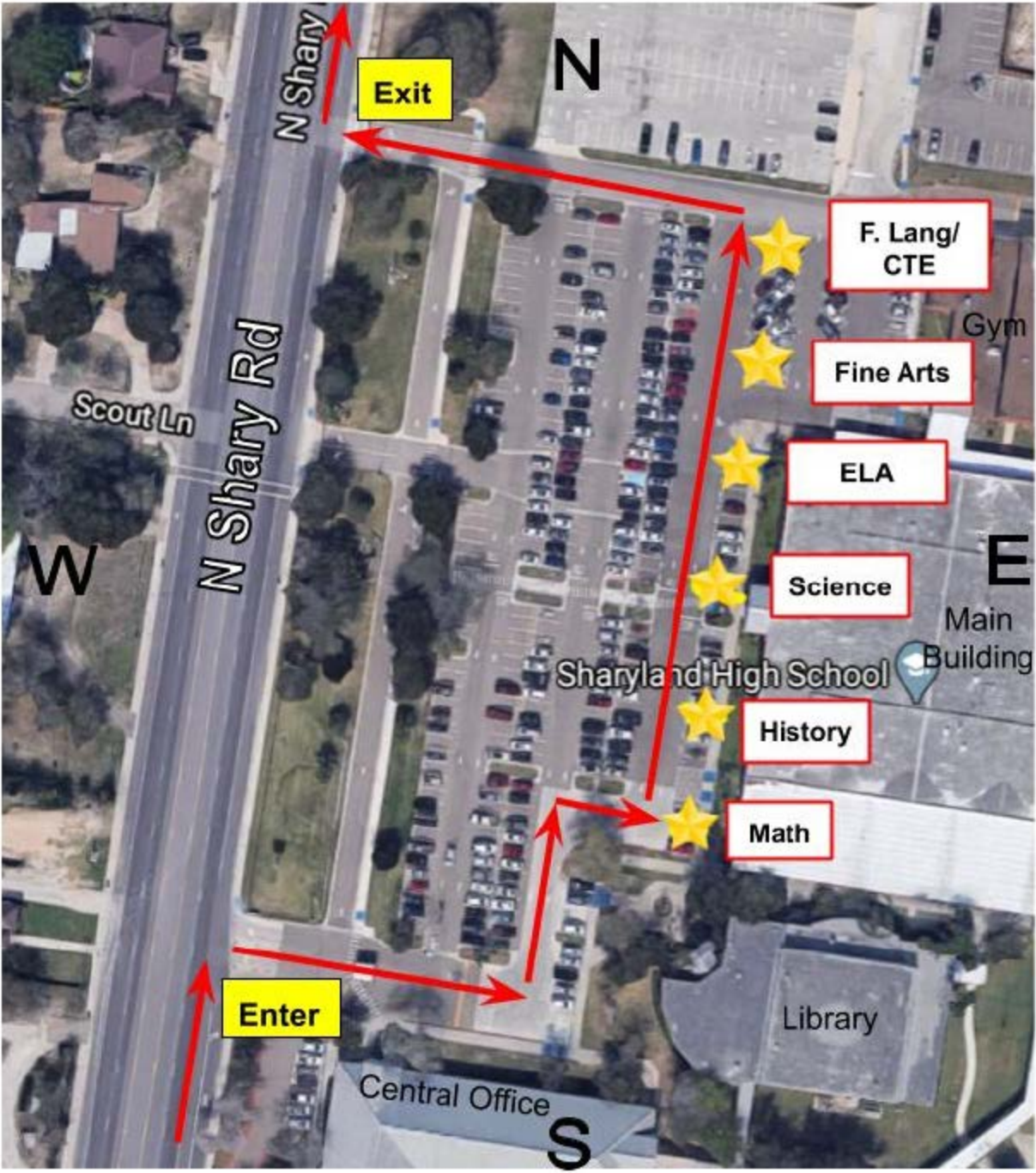
ELA

Fine Arts

Foreign Lang/CTE

See the example below. Just skip a subject if your child is not taking that course this semester. Your child should have only five or less classes.







SISD SUPERINTENDENT

Dr. Maria M. Vidaurri

BOARD OF TRUSTEES

Jose Garcia – President

Keith Padilla – Vice President

Julio Cerda – Secretary

Hector Rivera – Asst. Secretary

Dr. Noe Oliveira – Member

Ricky Longoria – Member

Melissa Smith – Member

1200 N. SHARY ROAD, MISSION, TX 78572 PHONE: 956-580-5200 FAX: 956-580-5229 WWW.SHARYLANDISD.ORG

Estimados padres y tutores,

Primero que nada, deseamos que usted y su familia se encuentren bien y sanos. Gracias de nuevo por su paciencia a medida que continuamos nuestros esfuerzos para apoyar el aprendizaje en casa para todos nuestros estudiantes. **Para los estudiantes que no pueden acceder a nuestros recursos de instrucción digital, hemos hecho paquetes instructivos para los alumnos de preparatoria.** Estos paquetes están diseñados para cubrir seis semanas de contenido que empezaron el 6 de abril y terminan el 15 de mayo, 2020.

El **jueves, 16 de abril, 2020**, tendremos la distribución de paquetes instructivos en la Escuela Preparatoria Sharyland (Sharyland High School) localizada en 1216 N. Shary Rd., Mission, TX 78572

Los tiempos de distribución son los siguientes:

Matutino 8:00 a 10:00 a.m.

Vespertino 4:00 to 6:00 p.m.

Por su seguridad y la nuestra, le pedimos su cooperación con las siguientes instrucciones cuando venga a recoger los paquetes para sus hijos(as). Por favor permanezca en su carro en todo momento, Pedimos que coloque una hoja de papel en el tablero, del lado del pasajero con los cursos que su hijo(a) está tomando este semestre. Favor de ver el ejemplo a continuación. Estaremos entregando los paquetes por la ventanilla del lado del pasajero. Si es posible, por favor tenga este asiento libre para limitar la exposición.

Animamos a las familias que no tienen acceso a las plataformas digitales de la preparatoria a hacer un esfuerzo por recoger los paquetes impresos. Las actividades incluidas ahí le ayudaran a su hijo(a) a mantener las destrezas que han aprendido durante los meses de instrucción previa. Por favor considere que hacer estos paquetes completos le permitirá a su hijo(a) la oportunidad de obtener crédito para el semestre y crédito final para cada uno de sus cursos. **Si usted TIENE acceso a las plataformas digitales, no tiene que recoger un paquete instructivo impreso.** Animamos a sus hijos(as) a que continúen usando las plataformas digitales para acceder y entregar su trabajo.

Queremos agradecerle su constante apoyo y comprensión. Juntos, nos aseguraremos de que nuestros estudiantes continúen siendo productivos y comprometidos con su aprendizaje.

Dra. María M. Vidaurri

Superintendente de Escuelas, Sharyland ISD

El Distrito Escolar Independiente de Sharyland no discrimina en base a raza, color de piel, nacionalidad, género, religión, edad o discapacidad en empleo o en la provisión de servicios, programas o actividades.

Confianza • Comunicación • Responsabilidad Colectiva • Cuidado • Orgullo

Please list your child's schedule in this order:

Math

History

Science

ELA

Fine Arts

Foreign Lang/CTE

See the example below. Just skip a subject if your child is not taking that course this semester. Your child should have only five or less classes.

